

Viavi MTS/T-BERD TB8000 V1 Mainframe & BERT Module Software Update Instructions



September 29, 2017

Table of Contents

Scope.....	2
1. USB Upgrade	2

Scope

There is one standard method to update T-BERD 8000 V1 software:

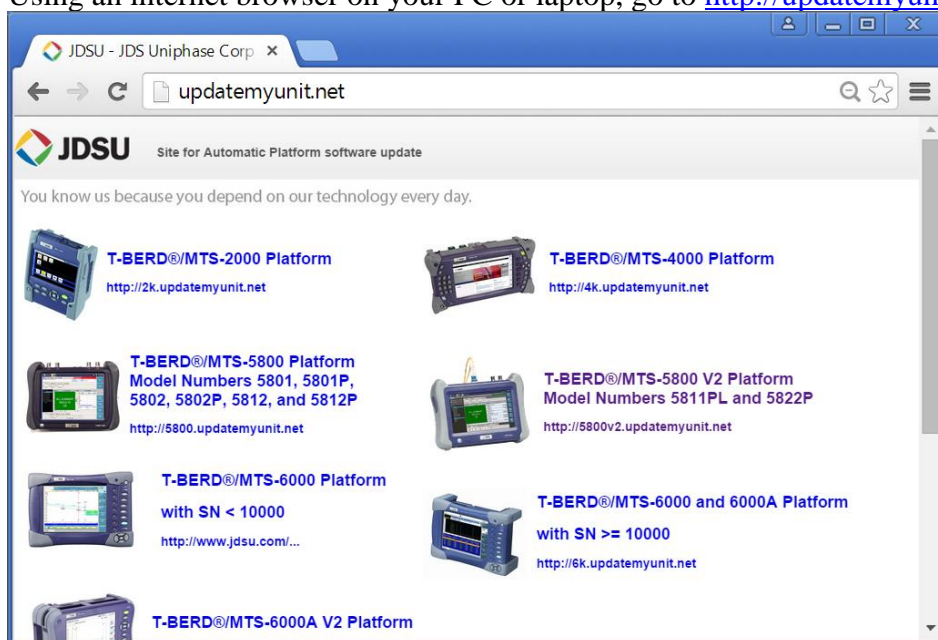
1. Network upgrade -N/A, the V1 8000 does not upgrade directly from the Internet.
2. USB upgrade - Use this method to update your T-BERD with a USB thumb drive.
3. StrataSync upgrade – N/A, the V1 8000 does not upgrade from Stratasync.

The T-BERD must be connected to AC Power, regardless of update method. Ensure that the current BERT software version meets the current minimum requirement as posted on the Viavi downloads page

USB UPGRADE

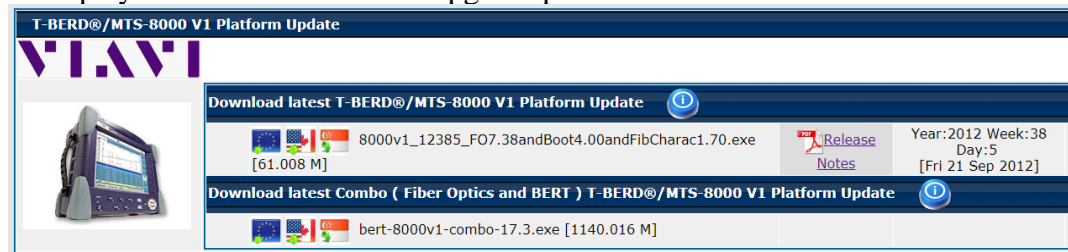
Step	Action	Details
------	--------	---------

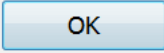
- | | | |
|----|------------------|---|
| 1. | Updatemyunit.net | Using an internet browser on your PC or laptop, go to http://updatemyunit.net/ |
|----|------------------|---|

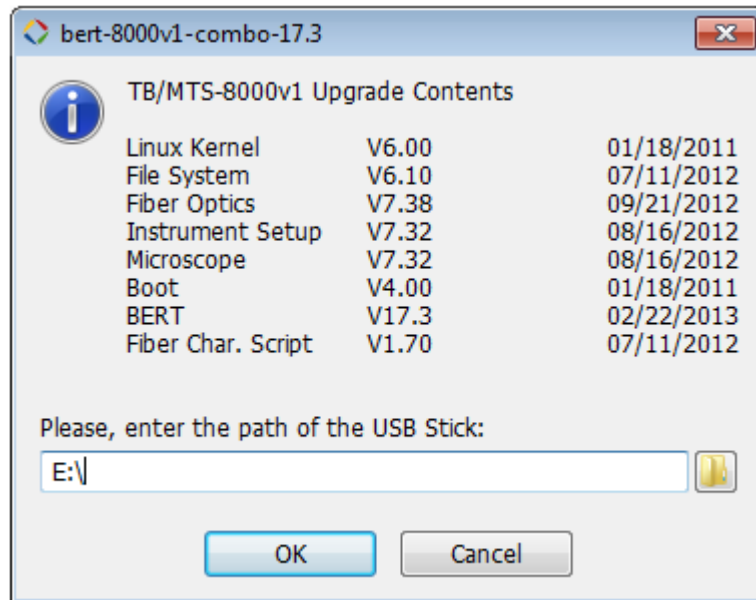


- | | | |
|----|--------|--|
| 2. | 8000v1 | |
|----|--------|--|

Click on  to display the T-BERD 8000 V1 upgrade portal.



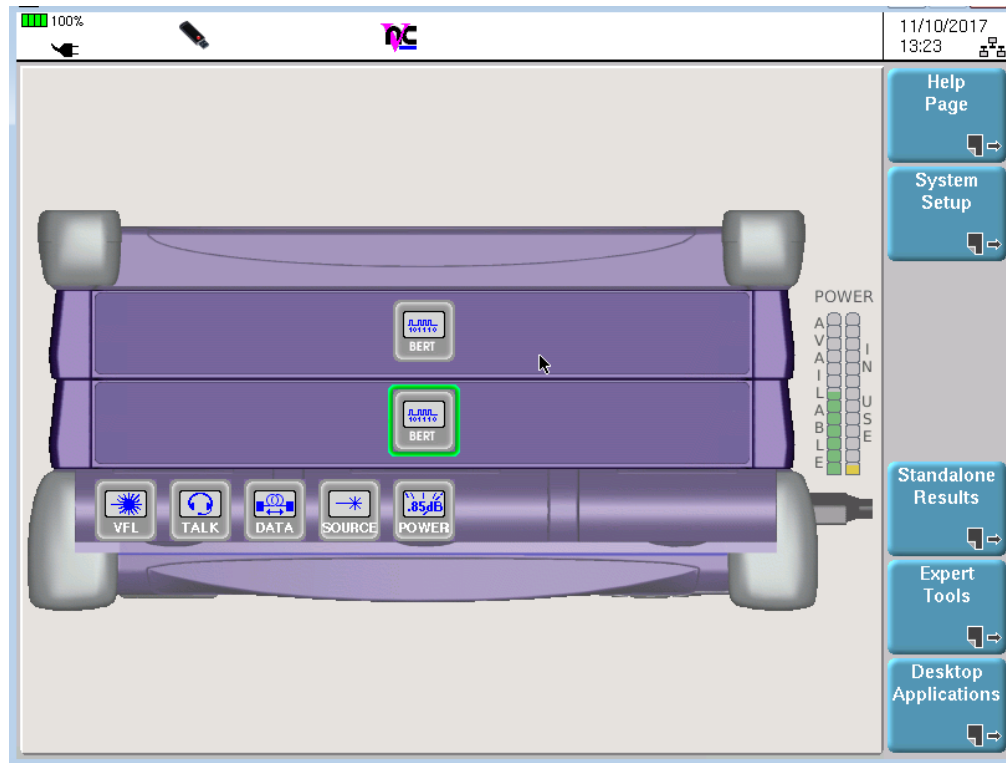
- 3. Download From the second selection labelled Download Latest Combo (Fiber Optics and BERT) click on the flag icon to download the current software revision from the selected download server. There are choices for North America, EMEA and APAC servers. Save it to your desktop and wait for the download to complete.
- 4. USB Stick Insert a USB thumb drive into the USB port on your PC or laptop.
- 5. Extract Open and run the downloaded file, enter the path of the USB stick, and press  to extract files.



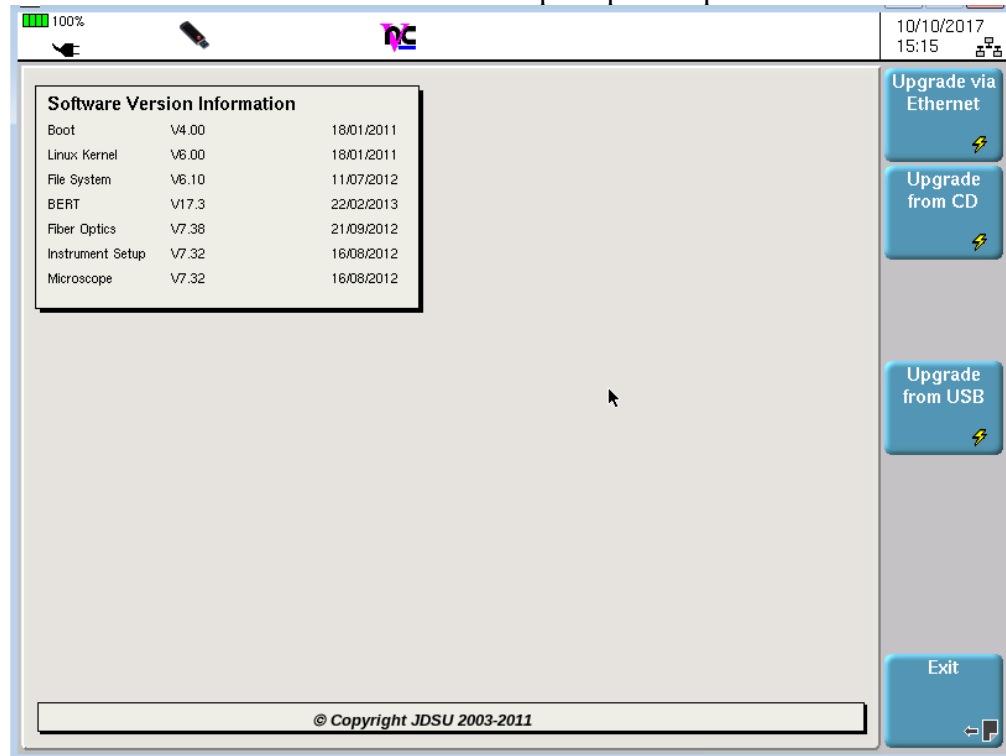
- 6. Eject Safely eject the USB drive from your PC or Laptop
- 7. Power on T-BERD Press and hold the ON/OFF button briefly to turn on the T-BERD 8000 V1.
- 8. Power Connect the AC power adapter to the power connector on the right side of the T-BERD 8000 V1. If you receive a prompt to press the ON key or enter power standby then press and release the ON button again.
- 9. USB Connect the USB Thumb Drive to one of the USB ports on the top of the T-BERD 8000 V1. An 8GB or smaller drive is recommended.

10. System

Press the SYSTEM button, to the right of the display, to display the SYSTEM Screen selections.

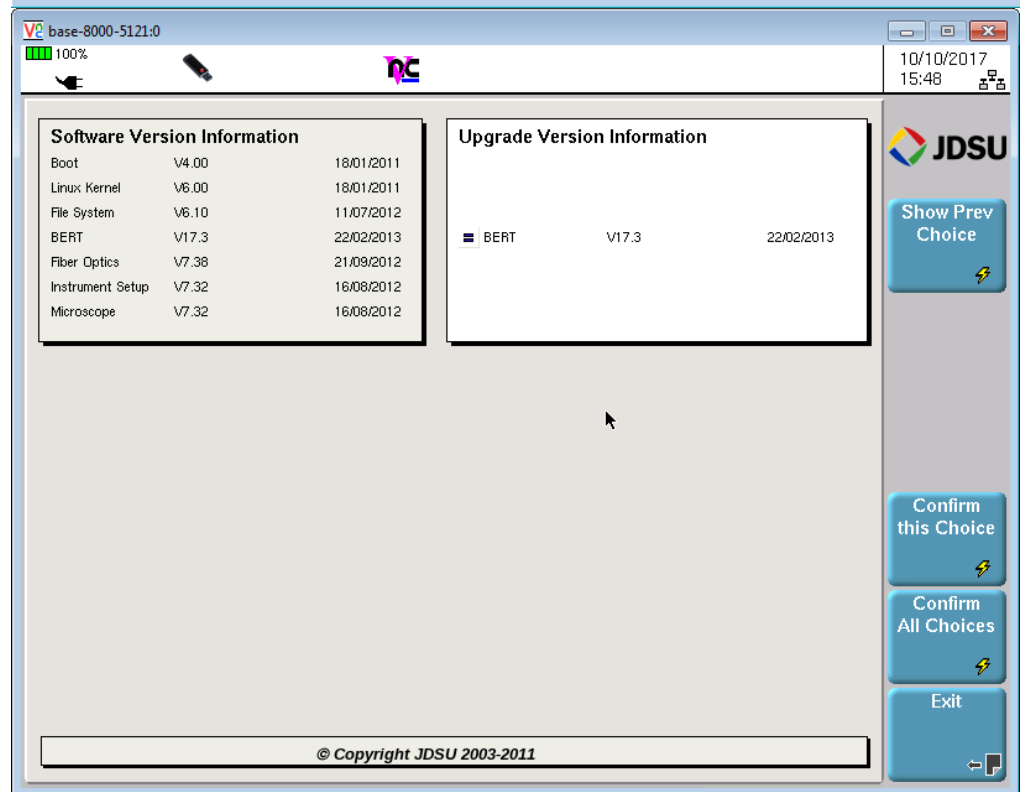
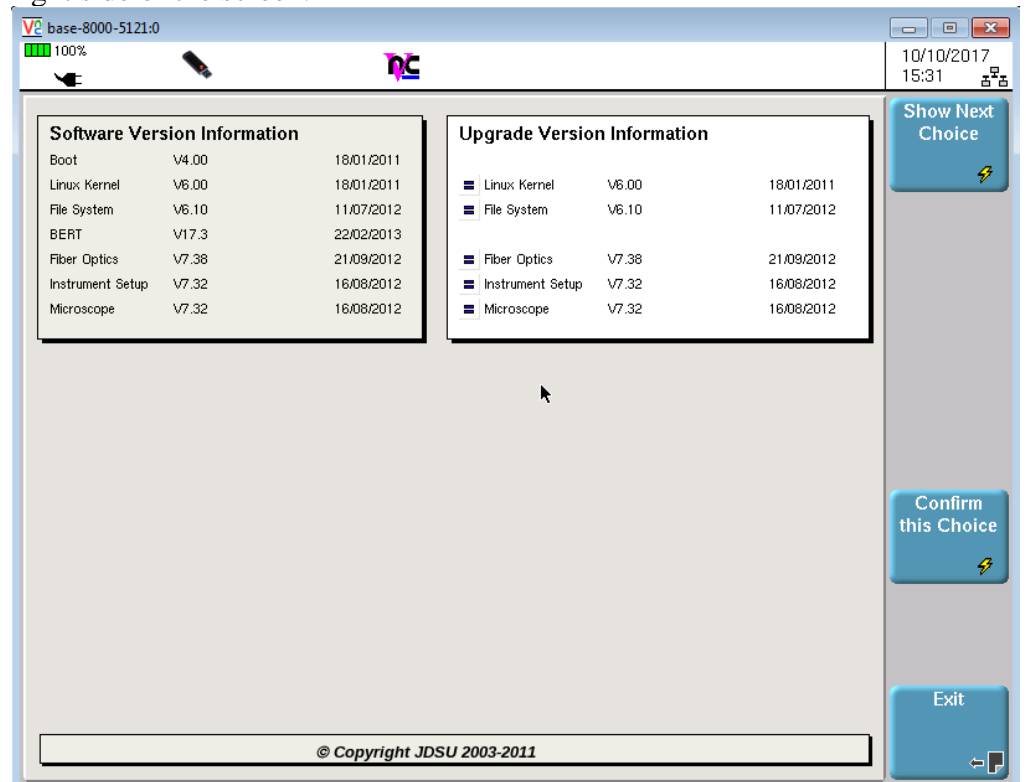


Press EXPERT TOOLS and then SOFTWARE UPGRADES and then UPGRADE FROM USB. Confirm when prompted to proceed.



11. USB Upgrade

The versions found on the USB will be displayed on the right side of the screen. Press SHOW NEXT CHOICE until the BERT version displays on the right side of the screen.



12. Start Upgrade

Press Confirm ALL Choices to start the upgrade.

